


Mouse CCL2 protein , His tag (Animal-Free)

Cat #: PRP1148

Size: 5 ug/20 ug/100 ug/1 mg

Product Information

	Product Name: Mouse CCL2 protein , His tag (Animal-Free)		
REF	Catalog Number: PRP1148	LOT	Lot Number: Refer to product label
	Purity: > 98 % as determined by SDS-PAGE		
	Storage: Store at -20°C		Preparation method: <i>E.coli</i>
	Shipping: The product is shipped at ambient temperature.		

Background: C-C motif chemokine 2 (CCL2) is a member of C-C or β chemokine family. There is 82% amino acid (aa) identity between mouse CCL2 and rat CCL2, and 58%, 56%, 55%, 53% and 53% aa identity with human, horse, pig, cow and dog CCL2, respectively. Fibroblasts, glioma cells, smooth muscle cells, endothelial cells, lymphocytes and mononuclear phagocytes can produce CCL2 constitutively or under mitogenic stimulation, but monocytes and macrophages seem to be the main sources. In addition to its chemotactic activity, CCL2 also induces monocytes, NK cells and lymphocytes to release enzymes and cytokines, and basophils expressing its receptor CCR2 to release histamine. CCL2-mediated recruitment of monocytes to inflammatory sites is considered to play a role in the pathology of atherosclerosis, multiple sclerosis and allergic asthma.

Sequence: Amino acid sequence derived from Mouse CCL2 (Gln24-Asn148) (P10148) with 6xHis tag at the N-terminus was expressed.

Protein length: The secreted Mouse CCL2 consists of 125 amino acids and has a predicted molecular mass of 14.6 kDa.

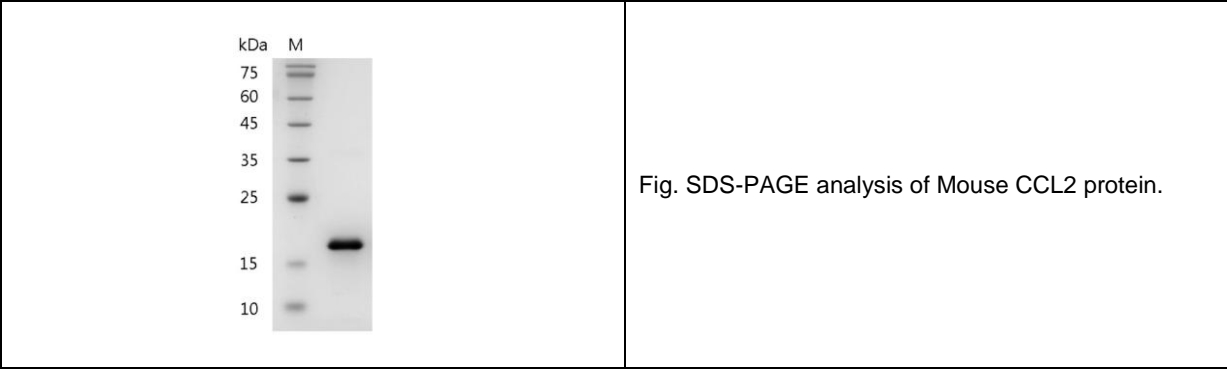
Biological Activity: Measure by its ability to chemoattract BaF3 cells transfected with CCR2A. The ED₅₀ for this effect is <8 ng/mL.

Endotoxin: < 0.1 EU per μ g of the protein as determined by the LAL method.

Formulation: Lyophilized from sterile PBS, pH 7.4.

Storage Instructions: Lyophilized protein product should be stored desiccated below -18°C. Upon reconstitution, the protein should be stored at 4°C between 2-7 days and for future use below -18°C. For long term storage it is recommended to add a carrier protein (5% HSA , 10%FBS or 0.1%BSA). Please prevent freeze-thaw cycles.

Usage notes: Always centrifuge tubes before opening. It is recommended to reconstitute the lyophilized Mouse CCL2 protein to a concentration of 0.1-1 mg/mL in sterile ddH₂O, and keep at room temperature for at least 20 min to fully dissolve. Please avoid vortex vigorously.



Note: The product listed herein is for research use only and is not intended for use in human or clinical diagnosis. Suggested applications of our products are not recommendations to use our products in violation of any patent or as a license. We cannot be responsible for patent infringements or other violations that may occur with the use of this product.